



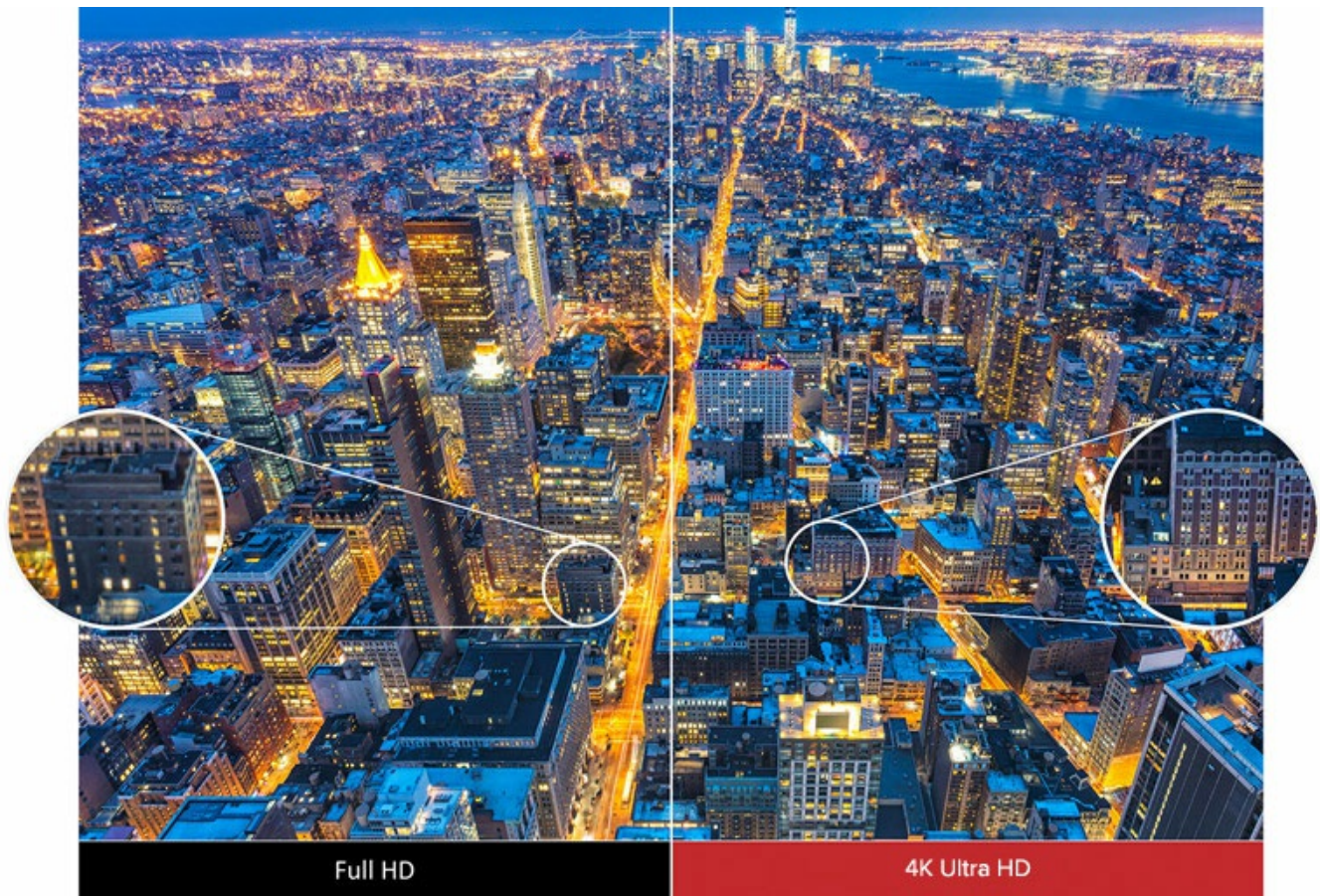
ViewSonic PX727-4K is a 2200 ANSI Lumens 4K Ultra HD projector for living room entertainment. PX727-4K leverages the latest XPR technology to project 8.3 megapixels of true 4K Ultra HD resolution for maximum detail. PX727-4K supports HDR and Rec. 2020 enhanced content, which maximizes detail in the darker and brighter parts of a scene for a viewing experience much closer to what is seen by the human eye. Color on this projector is powered by an RGBRGB color wheel that achieves 96% coverage of the cinematic standard Rec. 709 color space, enabling you to enjoy a cinematic experience in the comfort of your living room. Dual HDMI inputs offer quick connection to an array of devices, while the integrated USB power supply can be used as a power source for connected dongles and devices. Frequent projector users will rejoice at PX727-4K's long lamp life of up to 15,000 hours in SuperEco Mode which drastically reduces lamp replacement and maintenance costs.

Impressive Audiovisual Performance

True 4K Ultra HD

Enjoy the vivid detail of true 4K Ultra HD with 4X the clarity of Full HD. With 8.3 million pixels being projected onto your screen via XPR technology, PX727-4K meets the Consumer Technology Association (CTA) standards for 4K Ultra HD certification.

4K Ultra HD



Images with More Depth

PX727-4K supports HDR content to produce more realistic looking images and bringing flat images to life with more displayable information in the darker and brighter parts of a scene.

HDR Compatible



Without HDR



With HDR

Smooth Color Transitions

The specialized RGBRGB color wheel intensify reds, blues, and greens, while also focusing on hue and saturation enhancement to project images with smooth color gradients.

RGBRGB color wheel



Normal



RGBRGB color wheel

Cinematic Color

PX727-4K achieves 96% coverage of the Rec. 709 color space for excellent color accuracy and the same jaw-dropping cinematic color you would expect at a movie theater.

96% Coverage of **Rec.709**



Advanced Image Processor

Super Resolution

The super resolution feature re-masters each object individually to produce sharper and more detailed images.



Normal



Super Resolution

Color Enhancement

Color enhancement optimizes colors individually to maximize color gradation performance.



Normal



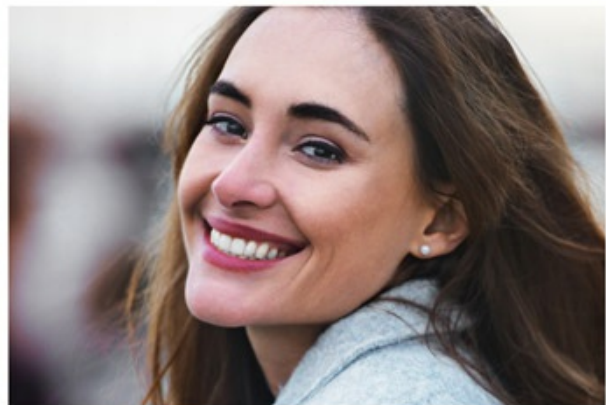
Color Enhancement

Skin Tone

The skin tone feature can prevent discoloration from the projection light, improving skin tones and achieving natural looking color tones.



Light Skin Tones



Rosy Skin Tones

Amazing Color Accuracy

ViewSonic's proprietary SuperColor™ Technology displays a wide color range, ensuring that users enjoy true-to-life color performance in both bright and dark environments without sacrificing image quality.

SuperColor™ Technology



Ease of Use

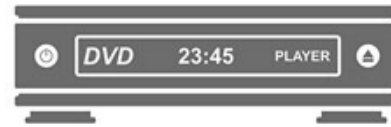
Extensive Connectivity for HD Devices

Enjoy true 4K content on the big screen with an HDMI 2.0 port that supports HDCP 2.2. This projector's HDCP 2.2 allows you to enjoy true 4K Ultra HD content from devices such as streaming boxes and newer 4K Ultra HD Blu-ray players which must be HDCP 2.2 compliant to pass 4K signal to 4K Ultra HD projectors.

Dual HDMI (1 HDCP 2.2)



HDCP2.2



Integrated Power Source

A built-in 5V/1.5A USB power output can be used to supply power to HDMI wireless dongles, eliminating the need for separate power adapters when streaming your favorite multimedia content.

USB Power Supply



User-friendly Remote Control

PX727-4K comes with a backlit remote control that makes operating the projector simple, especially in the dark.

Backlit Remote Design



Centralized Control

A centrally located power button makes for easy control of the projector's status and also doubles as an IR receiver for convenient projector management.

2-in-1 Power Button



2-in-1 Power Button

Low Total Cost of Ownership

Extended Lifespan

The SuperEco mode function will turn on automatically when projector has been left in standby for 3 minutes. SuperEco mode is able to extend lamp life to 15,000 hours on average, delivering reliable long-term usage.

15,000 hoursLifespan



Reduced Energy Consumption

When no signal has been detected, the projector will automatically power off to conserve energy and lamp life.

Auto Power Off



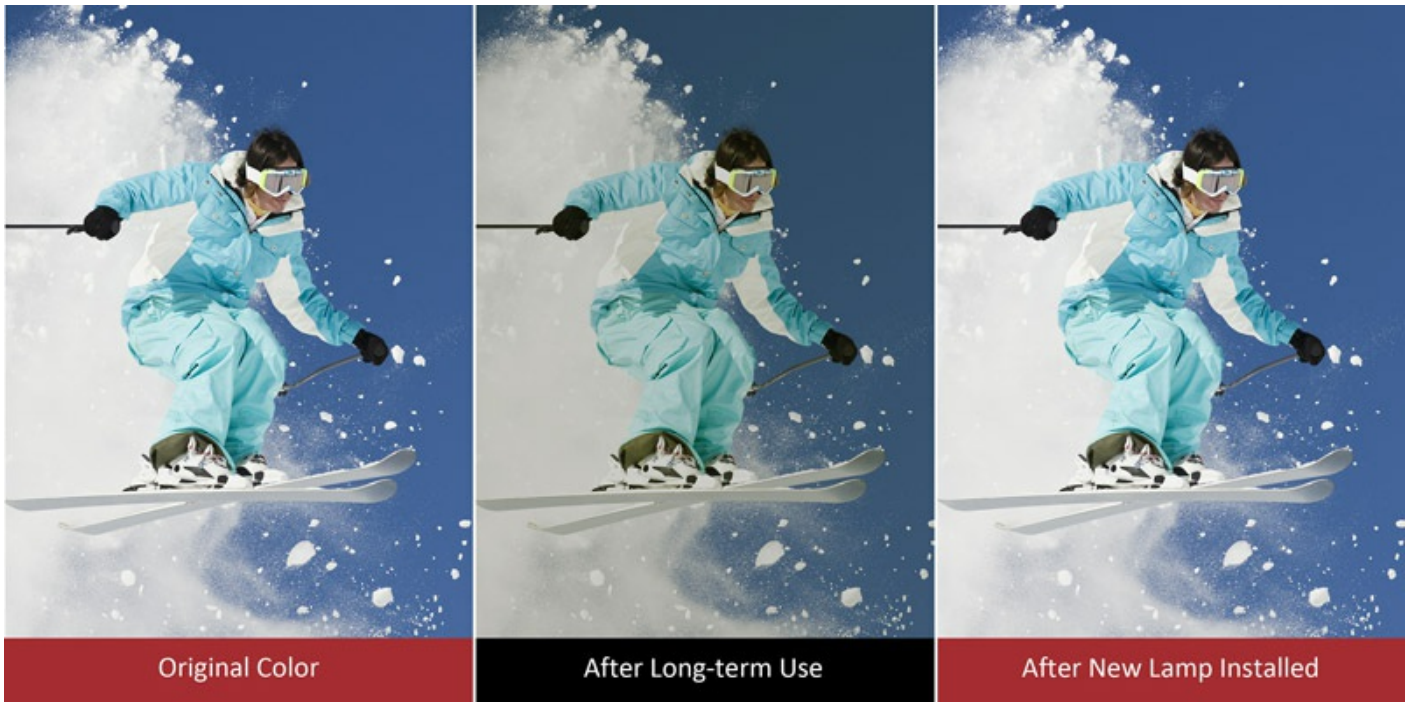
ViewSonic DLP Projectors

Exceptional DLP Image Quality

DLP display technology combines accurate, long lasting color with high native contrast ratios. Nowadays, about 90% of Movie Theaters use DLP technology for Digital Projection. The same technology that started a revolution just got a lot better!

Long-lasting Color Performance

Built on all-digital DLP technology, the DMD (Digital Micromirror Device) is able to recreate its incoming source material with each projection experience that will not fade over time. Therefore, ViewSonic DLP projectors virtually eliminate image degradation and deliver brand new color performance every time of use.



Crystal Clear Images

DMD structures a high fill factor pixel arrangement with small gap, so ViewSonic DLP projectors could produce smooth, clean images. The graphs and text is displayed more precisely and without “screen door effect”.



With
screen door effect



Without
screen door effect

High Native Contrast Ratio

The optical system used in ViewSonic DLP projectors provides “Deeper Black” and “Native High Contrast Ratios” due to DMD technology. A high contrast ratio adds depth to images and gives them a more realistic feel.



Low contrast ratio



High contrast ratio

Exterior & Rear I/O Connectors



1. Power key & Top IR
2. Keypad
3. LED indicator
4. Front IR

5. Zoom/Focus
6. Projection Lens
7. Audio in/out
8. Computer in
9. HDMI 1 (HDCP 2.2)
10. HDMI 2
11. Mini USB for Service
12. RS232
13. USB 5V/1.5V out
14. 12V Trigger
15. Kensington® Lock

Technical Specifications

SPECIFICATION	Projection system	0.47" 4K Ultra HD
	Native Resolution	3840x2160
	DC type	DC3
	Brightness	2200 ANSI Lumens
	Contrast Ratio with SuperEco mode	12000:1
	Display Color	1.07 Billion Colors
	Light Source	Lamp
	Light source life (Nor/SuperEco)	4000/15000
	Lamp Watt	240W
	Lens	F=1.94-2.06, f=15.57-18.67mm
	Projection Offset	120%+/-6%
	Throw Ratio	1.47-1.76
	Image size	30" - 300"
	Throw Distance	0.97m-11.69m (100" @3.26m)
	Keystone	±40° (Vertical)
	Optical Zoom	1.2x
	Audible Noise (Eco)	27dB (Silence mode)
	Resolution Support	VGA (640 x 480) to 4K (3840 x 2160)
	HDTV Compatibility	480i, 480p, 576i, 576p, 720p, 1080i, 1080p,2160p
	Horizontal Frequency	15K~135KHz
Vertical Scan Rate	23~120Hz	
Input	Computer in (share with component)	1
	Audio-in (3.5mm)	1
	HDMI (HDCP)	2 (HDMI 2.0/HDCP2.2 x1, HDMI1.4/HDCP 1.4 x1)
Output	Audio out (3.5mm)	1
	Speaker	10W
	USB type A (Power)	1 (5V/1.5A)
	12V Trigger	1
Control	RS232	1
	USB type mini B (Services)	1
Others	Power Supply Voltage	100-240V+/- 10%, 50/60Hz AC
	Power Consumption	Normal: 330WStandby: <0.5W

Operating Temperature	0~40°C
Carton	Color
Net Weight	4.2kg
Dimensions (WxDxH) w/adjustment foot	332x261x135mm
Language	English, French, Spanish, Thai, Korean, German, Italian, Russian, Swedish, Dutch, Polish, Czech, T-Chinese, S-Chinese, Japanese, Turkish, Portuguese, Finnish, Indonesian, Arabic, Vietnamese
Standard Accessory	
Power Cord	1
Remote Control	1 (with backlit)
QSG	1
Optional Accessory	
Lamp/Light Source	RLC-117
Warranty Card	Yes (JP Only)